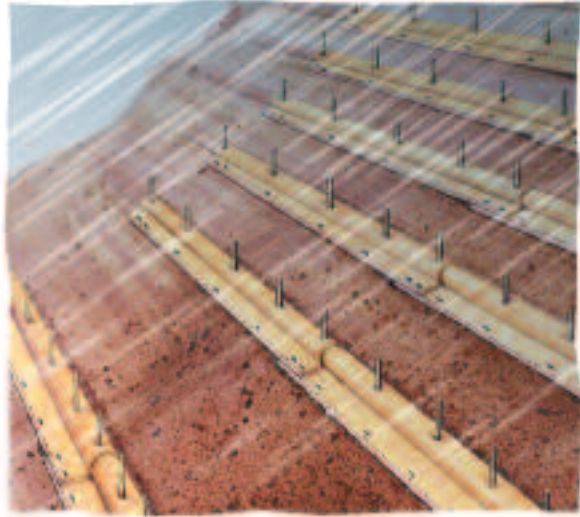


STOP Sediment

in its tracks with

SedimentSTOP®



*Sediment***STOP**
BIODEGRADABLE Filtration System

Manufactured by NORTH AMERICAN GREEN

the Versatile

SEDIMENT CONTROL SOLUTION

North American Green's SedimentSTOP® Biodegradable Filtration System is a temporary sediment filtration device that provides highly effective sediment control for a wide range of applications.



SedimentSTOP consists of a 70% straw / 30% coconut fiber matrix reinforced with a 100% biodegradable netting that is rolled from edge to edge to create a seamless temporary, water-permeable three-dimensional sediment filtration structure.

A Best Management Practice that reduces soil loss caused by stormwater runoff, SedimentSTOP traps soil particles while allowing water to pass through, protecting waterways, sidewalks and roads from sediment accumulation.

SedimentSTOP assists engineers, specifiers and contractors in complying with many NPDES Phase II rules and other environmental regulations.

SedimentSTOP saves soil, time, and money in applications that include:

Forest Fire Rehabilitation

Bioengineering Projects

Active Jobsites –
Commercial/New Home
Construction

Ski Slopes

Highway Construction

Industrial Sites

Pipeline Revegetation

Steep Slopes

Wet Areas

Edging/Perimeter Control

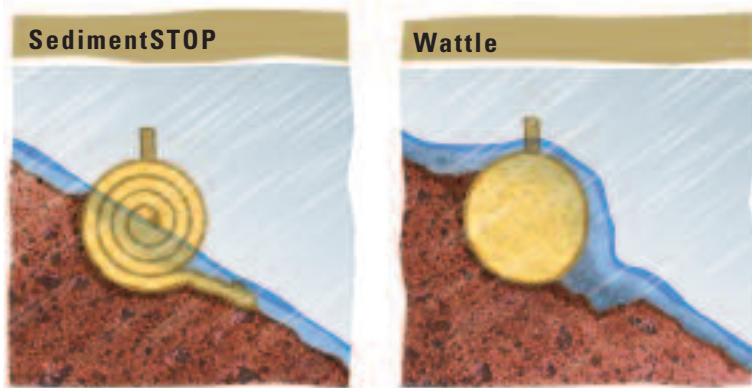


VERSATILE

the SedimentSTOP®

A D V A N T A G E

SedimentSTOP dramatically reduces surface sheet erosion, and offers significantly greater filtration capabilities and sediment retention than wattles, straw bales or silt fences. And unlike wattles, which use a single netting on the outside to encapsulate the fiber fill, SedimentSTOP utilizes multiple layers of netting to eliminate the possibility of failure if the outer netting is ever damaged.

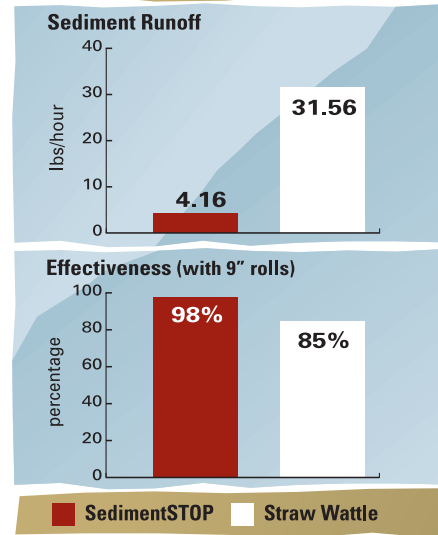


SedimentSTOP is more porous than a wattle, allowing it to perform as a buffer strip that slows water and filters sediment. In the event that water does flow over the top, SedimentSTOP has an attached Splash Apron, which reduces rill formation and potential down slope erosion.

Wattles create a dam-like structure that causes water to back up and flow over the top, resulting in potentially severe erosion on the down slope side of the wattle.



SedimentSTOP Performance vs. Straw Wattles



SedimentSTOP was put to the test against straw wattles in research recently conducted at Utah State University's Water Research Facility.

Three 20-ft. long plots of sandy loam soil were set at a 2:1 gradient. SedimentSTOP rolls with a 9-inch diameter were placed at the mid-point and 2 ft. from the bottom of one plot, straw wattles of the same diameter were similarly placed on a second plot, and one plot was left unprotected as the control. Sediment runoff was then collected and measured as each plot was exposed to 4 inches of rainfall over a one-hour period.

The sediment control effectiveness of SedimentSTOP versus the wattles was significant. While 31.56 lbs. of sediment was collected from the plot with straw wattles, only 4.16 lbs. of sediment was collected from the plot protected by SedimentSTOP. Compared to the bare soil control plot, the straw wattles were only 85% effective, while the SedimentSTOP was independently proven to be 98% effective at reducing sediment runoff!

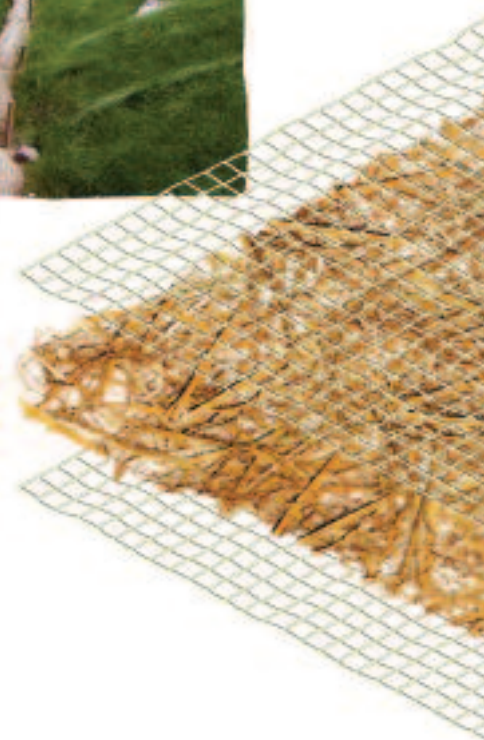
E F F E C T I V E

Biofriendly

SEDIMENT CONTROL

SedimentSTOP is an environmentally friendly, 100% biodegradable product. It can be incorporated with a variety of planting techniques such as: live planting, live staking and seed incorporation. The leno woven net enables its jute strands to move independently of each other, allowing the net openings to expand as necessary. This flexibility, combined with the 100% biodegradability, minimizes the risk of accidental wildlife entrapment.

Because it leaves absolutely no synthetic residues on site, SedimentSTOP is ideal for use in bioengineering projects, wetland mitigation, riparian area protection, shaded areas, stream bank restorations and environmentally-sensitive areas where synthetic-netted products may pose a threat to wildlife. By eliminating the need to return to the jobsite to remove the sediment control structure, SedimentSTOP saves you time, money and potential headaches.



NATURAL

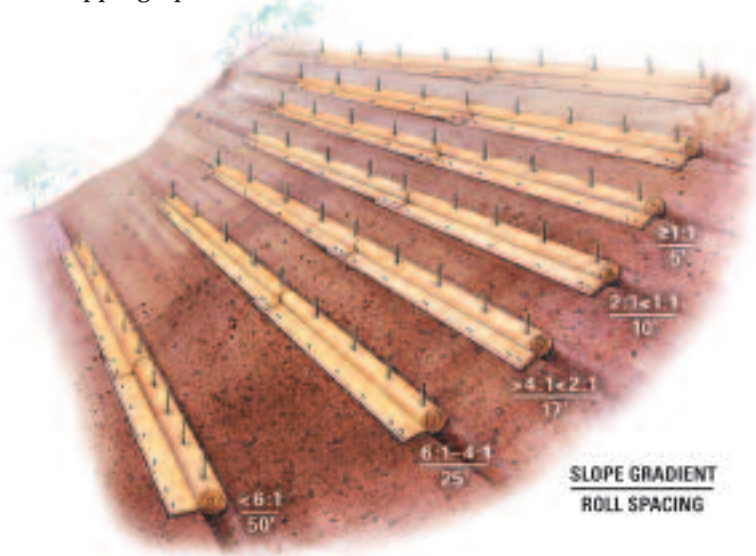
SedimentSTOP® is

EASY TO INSTALL

SedimentSTOP is easy to install, and features a two to three year functional lifespan. The structurally sound net-reinforced layers prevent failures – even if the outer netting wrap is damaged during or after installation.

SedimentSTOP is easily field fabricated for greater flexibility to specific site requirements. It is extremely flexible and readily conforms to the ground surface, minimizing undercutting. Longer, 50-foot finished roll length reduces the number of overlaps, and its leno woven natural jute net allows easier contouring to the soil. The short, lightweight packaged rolls are easily transported over difficult terrain and to remote areas.

Finished roll diameter can also be increased, if necessary, by simply adding other organic materials such as grass clippings, pine needles, straw, or leaves.



This illustration provides general guidelines to assist in the design, installation and spacing of SedimentSTOP. These guidelines may require modification due to variation in soil type, rainfall intensity or duration, and amount of runoff affecting the application site. As slope gradient increases the spacing between the SedimentSTOP structures should decrease. For example, on a slope with a gradient of 6:1 – 4:1 (H:V), the SedimentSTOP structures should be installed 25 feet apart. However, on a slope with a gradient of 2:1 – 1:1 the spacing should be reduced to 10 feet.

HERE'S HOW IT IS DONE:

Step 1

Dig a 3" deep x 9" wide anchor trench along the contour of the slope or across the swale.

Step 2

Position the SedimentSTOP® packaged roll perpendicular to the trench so the double-netted portion covers the anchor trench and extends downslope one foot beyond the anchor trench. (This forms the Splash Apron™.) Unroll to cover the trench.

Step 3

Secure SedimentSTOP material into the anchor trench with a row of staples, and then secure the downslope edge of the Splash Apron with another row of staples 12" apart.

Step 4

Roll the remaining SedimentSTOP material from the upslope edge into the anchor trench. (If a thicker roll is needed, simply add organic materials across the product width prior to rolling.)

Step 5

Once the product has been rolled up, secure it to the soil surface using wooden stakes 3' on center.

NOTE: The complete Installation Instructions are printed on each package of SedimentSTOP®.

PACKAGED ROLLS

Width - 6.67 ft (2.03 m)

Length - 50.00 ft (15.24 m)

Weight - 65.00 lbs (29.50 kg) ± 10%

Matrix - 70% Straw Fiber

1.225 lbs/yd² (0.665 kg/m²)

30% Coconut Fiber

0.525 lbs/yd² (0.285 kg/m²)

Bottom Netting – leno woven jute net

Splash Apron Top Net – 2.00 ft leno woven jute net

FINISHED INSTALLED STRUCTURE

Diameter - Approximately 9.00 in (0.23 m)

Length - 50 linear feet (15.2 m)

Downhill Splash Apron Length -1.00 ft (20 cm)

EASY

If you are thinking about using wattles, you need to STOP and consider

the advantages of using

SedimentSTOP.

SedimentSTOP Benefits Comparison Chart

When you compare the benefits of using SedimentSTOP against other sediment filtration methods, you'll see that there really is no comparison.

	SedimentSTOP	Straw Wattle	Silt Fence
Completely Biodegradable	YES		
Reduces Rill Formation	YES		
Customizable Diameter	YES		
Allows Water Filtration	YES		
Shallow Anchor Trench	YES	YES	
No Special Equipment Needed	YES	YES	
Little to no Risk of Wildlife Entrapment	YES	YES	
Seamless Joints	YES		YES
No Removal Required	YES		
Used on Slopes >2:1	YES	YES	
Multiple Layers of Netting	YES		
Customizable Lengths	YES		YES
Economical Bundles for Shipping	YES		YES

SedimentSTOP is economical, delivers exceptional performance, and is easily installed. Contact North American Green today for even more reasons to stop using wattles and start using SedimentSTOP.

1-800-772-2040
www.SedimentSTOP.com



SedimentSTOP

BIODEGRADABLE Filtration System

Manufactured by **NORTH AMERICAN GREEN**



EROSION CONTROL Products
Guaranteed SOLUTIONS

A **tensar** Company

14649 Highway 41 North
Evansville, Indiana 47725 U.S.A.
800-772-2040 | 812-867-6632 | www.nagreen.com